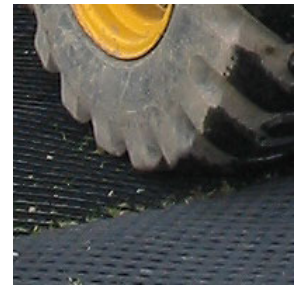




Track Mat



3904 Virginia Ave • Cincinnati, Ohio 45227 • Phone (513) 271-6000 • Fax (513) 271-4420

Track Mat

Track Mat is an extra heavy duty thermoplastic extruded mesh manufactured from high density polyethylene (HDPE) designed to support large weights. Track Mat's high profile provides extra grip for both wheeled and tracked vehicles. Track Mat is UV stabilized and unaffected by chemicals and can be re-used many times for long lasting protection.

Track Mat is supplied in 6.73' x 4' panels that weight 21.9 lbs, yet will support vehicles up to 20 tons.

Simply lay Track Mat down and join it to the ground with either fixing pins or cable ties. Track Mat can be used for temporary or permanent applications. The apertures (openings) in the mesh will allow grass to grow through providing a stable and green environment.

Applications: Any grassed or hard standing areas subject to very heavy loads (up to 20 tons).

PHYSICAL PROPERTY	VALUE	
Polymer	HDPE + Foaming Agent	
Mesh Shape	Rhomboidal	
Color	Black	
DIMENSIONAL PROPERTY	ENGLISH	METRIC
MD Pitch	1.85 in	47.0 mm
TD Pitch	1.65 in	42.0 mm
Unit Weight	-	4,000 g/m²
Panel Width	6.73 ft	2.05 m
Panel Length	4 ft	1.2 m
Panel Weight	21.9 lbs	9.9 kg
MECHANICAL PROPERTY	ENGLISH	METRIC
Tensile Strength MD <small>ASTM 4595</small>	114 lbs/in	22 kN/m
Tensile Strength CD <small>ASTM 4595</small>	126 lbs/in	20 kN/m
Elongation at peak CD	50%	50%
Compressive Strength, Residual Thickness @ 720 kPa	ASTM D-6364	50%

Accessories: Metal Fixing Pins 100 x J-Pins 12"x 1"x 4" # 6 Steel
 Metal Fixing Pins 100 x U-Pins 8"x 1"x 8" # 6 Steel

Notes:

If the Track Mat is being laid over clay soil, a suitable drainage system should be installed to allow for removal of surface water. If the ground is particularly soft, please seek the advice of a professional. Installation of Track Mat does not solve drainage problems.

www.usfabricsinc.com

The above information is to the best of our knowledge accurate, but is not intended to be considered as a guarantee. Any implied warranty for a particular use or purpose is excluded. If the Product does not meet the above properties, and notice is given to US Fabrics, Inc., the product will be replaced or refunded. (1/2009).