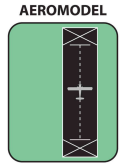


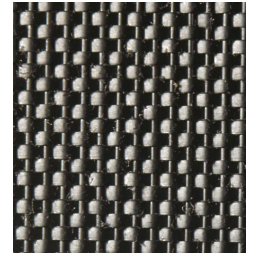


US 230 Aeromodeling

Woven Runway Fabric



US 230 Aeromodeling Geotextile is a 100% polypropylene, woven, monofilament fabric ideal for runway installation for model airplanes. US 230 resists ultraviolet and biological deterioration, rotting, naturally encountered basics and acids. Polypropylene is stable within a pH range of 2 to 13. US 230 Aeromodeling Geotextile meets the following M.A.R.V. properties:



PROPERTY	TEST METHOD	ENGLISH	METRIC
Grab Tensile Strength	<u>ASTM D-4632</u>	400 x 315 lbs	1,780 x 1,402 N
Elongation @ Break	<u>ASTM D-4632</u>	15 %	15 %
CBR Puncture	<u>ASTM D-6241</u>	1,150 lbs	5,118 N
Trapezoidal Tear	<u>ASTM D-4533</u>	150 x 165 lbs	668 x 734 N
Apparent Opening Size ^(1,2)	<u>ASTM D-4751</u>	40 US Sieve	0.425 mm
Permittivity ⁽¹⁾	<u>ASTM D-4491</u>	0.9 Sec ⁻¹	0.9 Sec ⁻¹
Water Flow Rate ⁽¹⁾	<u>ASTM D-4491</u>	70 g/min/f ²	2,852 L/min/m ²
Percent Open Area	CW-02215	1 %	1 %
UV Resistance @ 500 Hours	<u>ASTM D-4355</u>	90 %	90 %

⁽¹⁾ At the time of manufacturing. Handling, storage, and shipping may change these properties.

⁽²⁾ Maximum average roll value (MaxARV).

US 230 Aeromodeling Shipping & Packaging Information

SIZE	DIAMETER	WIDTH	WEIGHT	AREA	ROLLS PER TRAILER
15' x 300'	13"	15'	320 lbs	500 y ²	120

US Fabrics, Inc. | 3904 Virginia Avenue | Cincinnati, OH 45227
Phone: (800) 518-2290 | Fax: (513) 271-4420 | email: info@usfabrics.com

This information is provided for reference only and is not intended as a warranty or guarantee.
 US Fabrics assumes no liability in connection with the use of this information.